



navira

THE SECOND SKIN

About us

Enova Textile and Apparel is established to design, develop and market lingerie globally. ETA is located in Coimbatore - India, supported by a factory of about 10,000 square feet for manufacturing lingerie.

Our Management team has over 30 years of combined experience in retail and fashion industry. With rich experience in retail and fashion industry, knows the pulse of the market and ability to provide best quality garments at affordable price. We have effective supply chain management system which helps us to deliver garments at the right time with superior comfort and quality.

ETA is committed to not only meeting but also exceeding all customers requirements, thus ensuring a comfort guaranteed that is carried throughout each step of the development process. The end result leads to the complete satisfaction of every customer and enhanced growth and success of the company.

Vision

To be the preferred Global lingerie Brand.

Mission

ETA has always been to transcend fashion in order to inspire people to feel good and put their best selves forward that drive long-term loyalty.

Values

- We take responsibility for product Quality and Reliability.
- We deliver on our promises.
- We provide the courage to shape a better future.
- We build social values.
- We treat everyone with respect and dignity.





swetha NB 101

Super Combed Cotton Stretchable Fabric

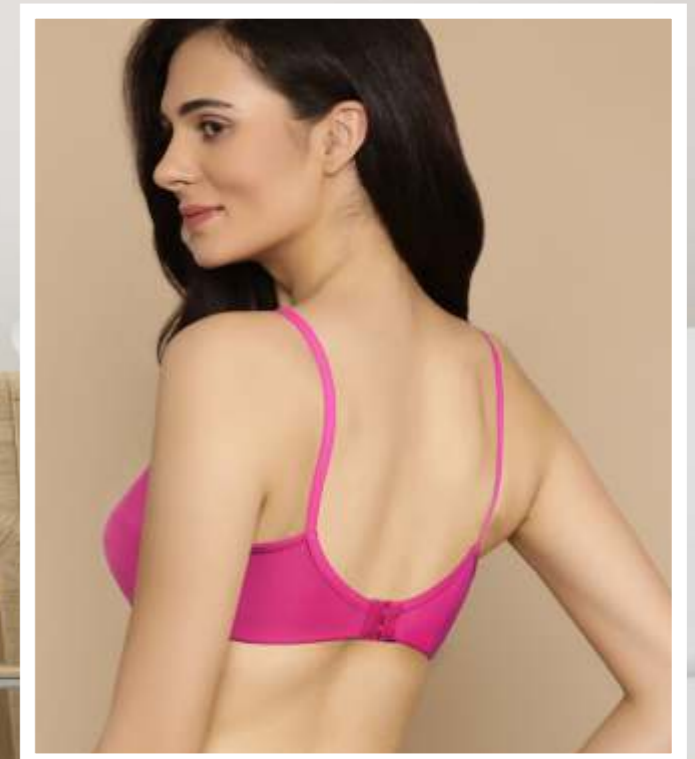
Full Coverage Bra Shapes Your Curve

Crafted Cut & Sew For Excellent Support And Coverage

Adjustable Micro Fibres Straps With Feather Feel

Transfer Label For All Day Comfort

CUP SIZE	30	32	34	36	38	40
B		✓	✓	✓	✓	





meera **NB 102**

Compact Combed Cotton Elastane Stretchable Fabric

Double Layer Moulded Fabric For Better Drapability

Bio Finished For Feather's Feel

Sleek Strap To Complement Your Anytime Wear

Transfer Label For All Day Comfort



CUP SIZE	30	32	34	36	38	40
B	✓	✓	✓	✓	✓	✓





seeta NB 103

Super Combed Cotton Stretchable Fabric

Modern Fit Medium Coverage Bra

Super Soft Adjustable Strap

Feminine Scalloping At Neckline

Transfer Label For All Day Comfort

CUP SIZE	30	32	34	36	38	40
B		✓	✓	✓	✓	





maya NB 104

Compact Combed Cotton Elastane Stretchable Fabric

Moulded Cup For Modern Women

Hidden Shaper For Better Support

Super Soft Adjustable Strap

Transfer Label For All Day Comfort



CUP SIZE	30	32	34	36	38	40
B	✓	✓	✓	✓	✓	





indira NB 105

Compact Combed Cotton Elastane Stretchable Fabric

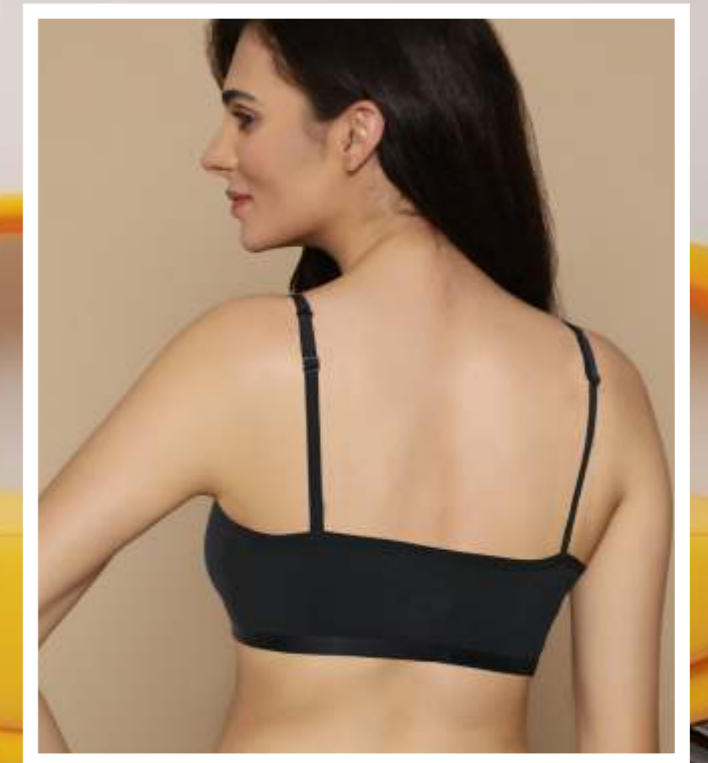
Crop Top Bra With Wider Armholes

Soft Adjustable Cross Over Strap

Soft Bottom Band Elastic

Transfer Label For All Day Comfort

CUP SIZE	30	32	34	36	38	40
B	✓	✓	✓	✓	✓	





manu NB 106

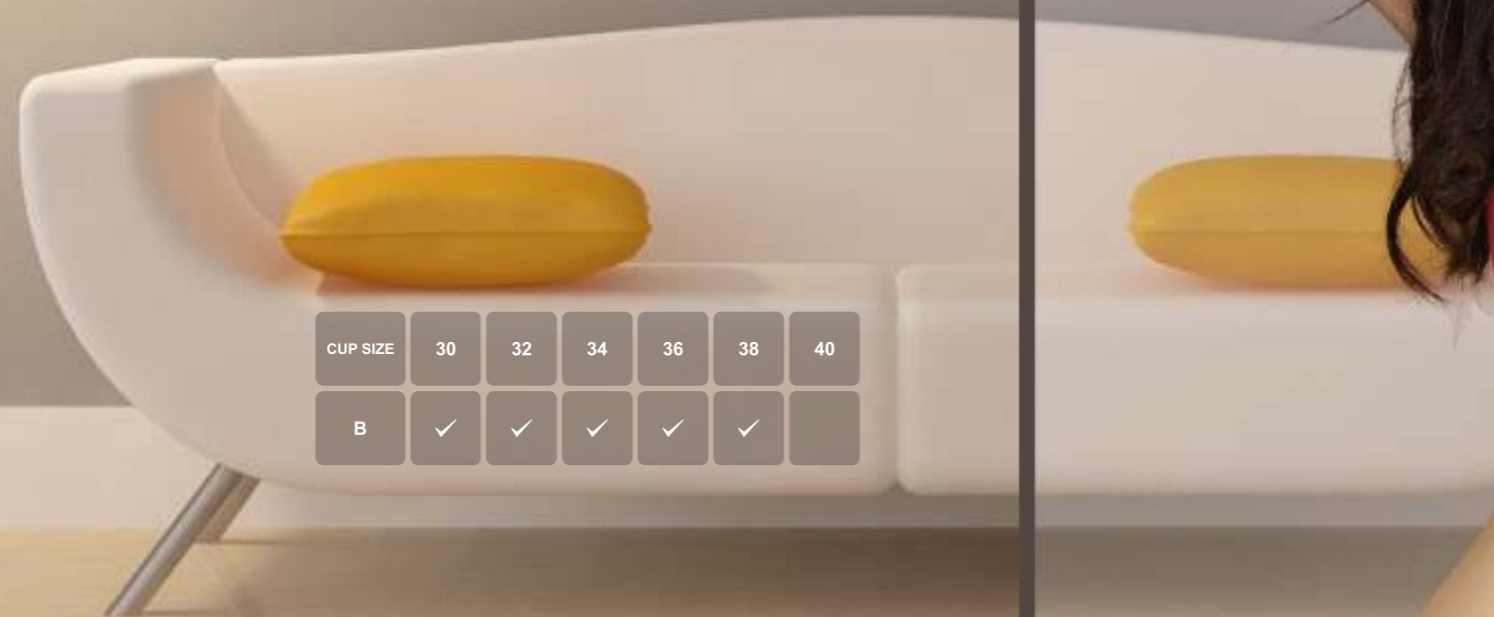
Compact Combed Cotton Elastane Stretchable Fabric

Crop Top Bra With Wider Armholes

Adjustable Cross Over Strap

Fabric Covered Underband For Feather's Touch

Transfer Label For All Day Comfort



CUP SIZE	30	32	34	36	38	40
B	✓	✓	✓	✓	✓	





Saina NB 302

Compact Combed Cotton Elastane Stretchable Fabric
Encircled Shaper To Replace Under Wire For Maximum Support
Full Coverage Bra Shapes Your Curve
Adjustable Micro Fibres Straps With Feather Feel
Transfer Label For All Day Comfort



CUP SIZE	30	32	34	36	38	40
B		✓	✓	✓	✓	✓





usha NB 303

Poly Elasthane Stretchable Fabric

Seamless Bra With Soft Pad

Medium Coverage Bra Contours Your Curves

Adjustable Multiway Strap

Transfer Label For All Day Comfort



CUP SIZE	30	32	34	36	38	40
B	✓	✓	✓	✓	✓	





priya NB 304

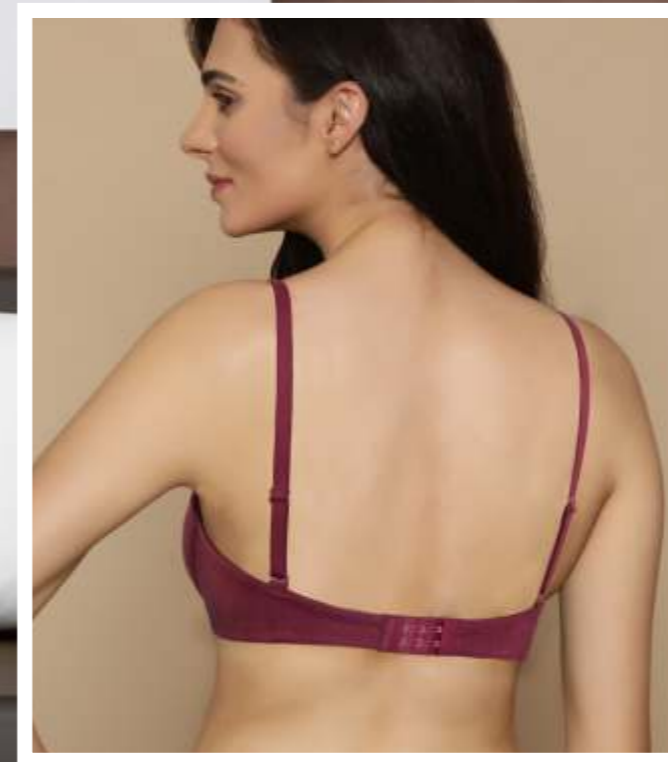
Compact Combed Cotton Elastane Stretchable Fabric

Moulded Cup With Apex Concealer For Modern Women

Medium Coverage Hidden Shaper Bra

Super Soft Adjustable Multiway Strap

Transfer Label For All Day Comfort



CUP SIZE	30	32	34	36	38	40
B	✓	✓	✓	✓		





hina NB 305

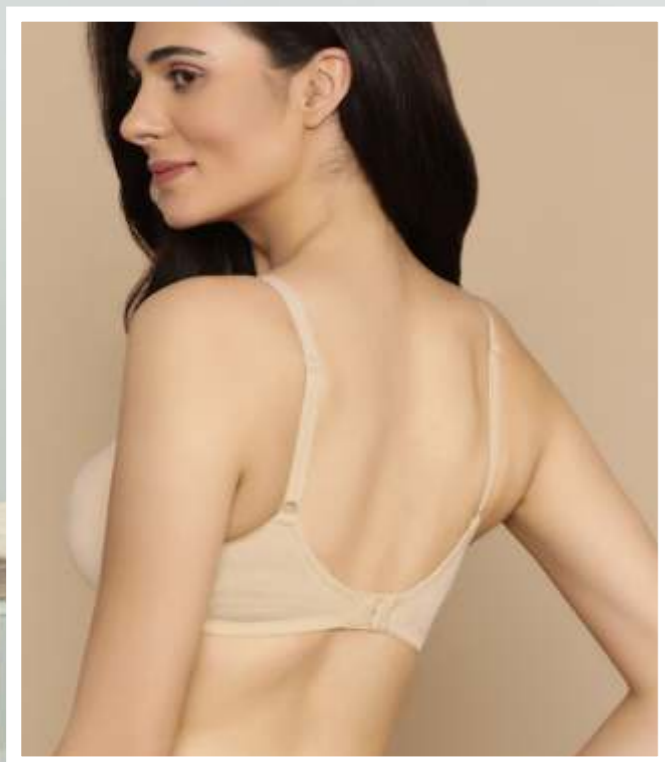
Compact Combed Cotton Elastane Stretchable Fabric

Full Coverage Bra Shapes Your Curve

Crafted Cut & Sew For Excellent Support And Coverage

Adjustable Micro Fibres Straps With Feather Feel

Transfer Label For All Day Comfort



CUP SIZE	30	32	34	36	38	40
B		✓	✓	✓	✓	





pushpa NB 308

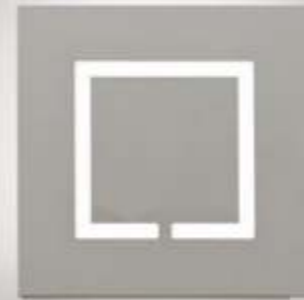
Super Combed Cotton Rich Stretchable Fabric

Seamless Bra With Soft Pad

Medium Coverage Bra Contours Your Curves

Super Soft Adjustable Strap

Transfer Label For All Day Comfort



CUP SIZE	30	32	34	36	38	40
B		✓	✓	✓	✓	





sindhu NB 501

Compact Combed Cotton Elastane Stretchable Fabric

Full Coverage Non-padded Wire-free Bra

Unique M-frame Lace Bra For Excellent Support And Coverage

Broader Adjustable Micro Fibres Strap With Feather Feel

Transfer Label For All Day Comfort



CUP SIZE	30	32	34	36	38	40
B			✓	✓	✓	✓





saniya NB 902

Compact Combed Cotton Elastane Stretchable Fabric
Sports Bra With Moulded Cups For Better Fit
Broad Underband For Better Support And Stability
Soft And Stretchable Band At Shoulder
Transfer Label For All Day Comfort



CUP SIZE	30	32	34	36	38	40
B		✓	✓	✓	✓	





Rom NB 307

Compact Combed Cotton Elastane Stretchable Fabric
Bra Crafted To Permit Comfortable Breast Feeding
Under Bust Micro Fibre Elastic For Feather's Feel
Pthalate Free Clips For Safe Feeding
Transfer Label For All Day Comfort



CUP SIZE	30	32	34	36	38	40
B			✓	✓	✓	✓





Bikini

Compact Super Combed Cotton Stretchable Fabric

Modern low rise bikini

Bikini with and without Seam

Transfer Label For All Day Comfort

HIP SIZE	S	M	L	XL	2XL
AVILABLE	✓	✓	✓	✓	✓

hipster

Compact Super Combed Cotton Stretchable Fabric

Higher fit at the waist and greater coverage on the sides

Hipster with and without Seam

Transfer Label For All Day Comfort

HIP SIZE	S	M	L	XL	2XL
AVILABLE	✓	✓	✓	✓	✓



How to Fit

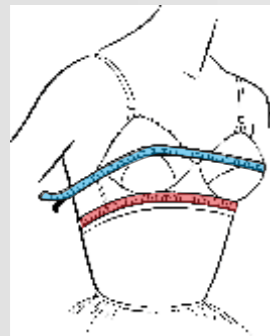
Use step-by-step measuring instructions will ensure a perfect fit.

Step 1 : Your Band Size

While braless or wearing a non padded bra, measure directly under your bust - **Red line** in the picture. If the **Red line** number is even, add four inches. If it's odd, add five.

Your band size is the sum of this calculation. (So, If you measured 28 inches, your band is size is 32.

You measured 29 inches your band size is 34).



DIFFERENCE	CUP SIZE
1"-3"	B
3"-5"	C

Step 2 : Your Bust Measurement ?

Measure around the fullest part of your chest - **Blue line** in the picture and rounded off to the nearest whole number.

Step 3 : Calculate your Size

Abstract your band size from your bust measurement and refer to chart.

Example : 36 inches (**Blue line**) - 34 inches (**Red line + 4"**) - 2 inches.

Your size is 34 B.

Tip to wear correct size Brassier

Bend forward at the waist, then slip on the bra and hook it. This ensures your breasts are completely in the cups.

Adjust the band. The back of the bra should be level with the front.

Make sure the bra is not too tight. Slide two fingers underneath the straps and under the band.

Fix falling straps : First tighten the band, and then shorten the straps.

Put on the close - fitting shirt over the bra. If the cups pucker or your breasts bulge, you're not wearing the correct size.

Look at yourself sideways in the mirror. Your breasts should sit midway between your shoulders and elbows. If not, you need a more supportive and better - fitting bra.

Choose a bra that fits perfectly when secured on the outermost hook. As the bra loosens over time, make the band taut by moving toward the tightest hook

Kind Advice :

Be free from bras atleast 8 hours daily to retain anatomy of your breasts.

If you have any queries, please write to us at : "director@navira.org.in"



About Brand

Navira - Top of the Mountain, a preferred intimate wear brand offering comfort, fashion and pride for confident teens and smart women who are young at heart. The products are designed to drape the women to feel fabulous and look to their absolute best, every minute.

The perfect blend of passion, precision and uncompromised expertise enables the brand to stay ahead of competition. Each product is of latest trends and crafted from latest technology to meet the varied needs of the contemporary Indian women thereby giving the femininity and modern look.

The Brand offers intimate wears : athleisure and night wear to suit the women of all ages, shapes and size.

The Brand has been priced within the fast growing “Bottom of Pyramid Segment”.

The Brand maintains integrity through the product, process and people, the Brand stands to emphasize on a personality that benefits the consumer emotionally and connects with their needs thereby remaining as ultimate inner wear choice of women.





Marketed By:
ENOVA TEXTILE AND APPAREL
India

www.navira.org.in
www.enovatextile.in

Follow Us On

